



SPARE PARTS BOOKLET

CONTENTS

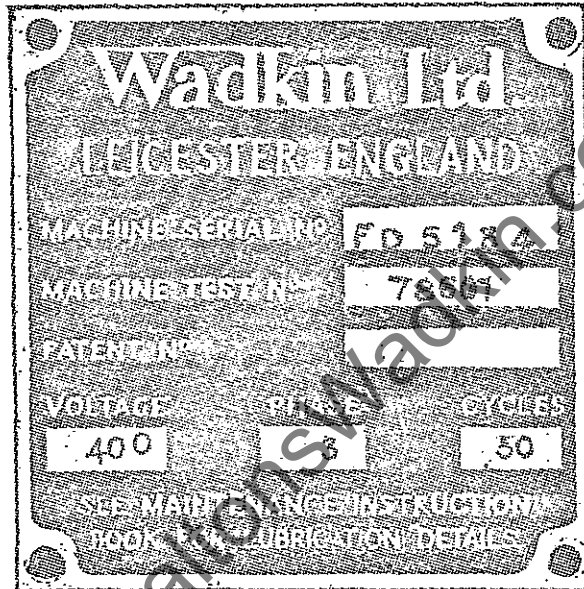
1. Basic ordering requirements.
2. Sample type order.
3. List of item numbers and description of item.
4. Drawing showing item numbers.

www.DaltonsWadkin.com

ECA
SINGLE END TENONING
MACHINE

SPARE PARTS

Should spare parts be required due to breakage or wear full particulars including the machine and test number must be given. This information is on the nameplate attached to the machine and will be similar to the picture below.



Please see the next page for sample detail of how to order spare parts.

MACHINE: ECA

MACHINE NO: 1407

TEST NO: 68975

PARTS REQUIRED

1 - EC250/EC8 FENCE
1 - EC250/EC32 SLIDE FOR TOP TENON
1 - EC250/EC70 GEAR
1 - EC250/EC126 SPRING FOR CRAMP PLATE
1 - EC250/EC215 SPACING COLLAR

www.DaltonsWadkin.com

| | |
|--------------|-------------------------------------|
| EC250/EC1/A | BASE |
| EC250/EC3 | L.H. TABLE WAY |
| EC250/EC4 | R.H. TABLE WAY |
| EC250/EC5 | L.H. TABLE |
| EC250/EC6 | R.H. TABLE |
| EC250/EC7 | SLIDING TABLE |
| EC250/EC8 | FENCE |
| EC250/EC9 | COVER FOR BASE (CONTACTOR) |
| EC250/EC10 | SLIDE FOR CUT OFF SAW |
| EC250/EC11 | FRONT END COVER FOR TENON HEAD |
| EC250/EC12 | PILLAR |
| EC250/EC20 | BRIDGE FOR DUPLEX ELECTRIC CLAMP |
| EC250/EC21 | ECCENTRIC FOR DUPLEX ELECTRIC CLAMP |
| EC250/EC22 | ADJ. CLAMP |
| EC250/EC23 | CLAMP HANDLE |
| EC250/EC32 | SLIDE FOR TOP TENON |
| EC250/EC33 | SLIDE FOR BOTTOM TENON |
| EC250/EC38/A | GEAR BRACKET |
| EC250/EC49 | TOP TENON SPINDLE |
| EC250/EC50 | BOTTOM TENON SPINDLE |
| EC250/EC55 | BEARING HOUSING |
| EC250/EC56 | BEARING HOUSING |
| EC250/EC57 | STATOR FRAME |
| EC250/EC70 | GEAR |
| EC250/EC72 | IDLER GEAR SHAFT |
| EC250/EC73 | OPERATING LEVER |
| EC250/EC74 | VERT. ADJ. SCREW (TOP TENON) |
| EC250/EC75 | VERT. ADJ. SCREW (BOTTOM TENON) |
| EC250/EC76 | HEX HD SCREW FOR GEAR BRACKET |
| EC250/EC78 | HANDWHEEL SHAFT |

| | |
|-------------|---|
| EC250/EC79 | GREASE RETAINER |
| EC250/EC80 | BRAKE DRUM |
| EC250/EC81 | PIVOT PIN FOR OPERATING LEVER |
| EC250/EC82 | PIN FOR IDLER GEAR SHAFT |
| EC250/EC83 | BUSH FOR IDLER SHAFT |
| EC250/EC84 | WASHER FOR IDLER SHAFT |
| EC250/EC96 | GUARD FOR CUTTERBLOCK |
| EC250/EC97 | GUARD FOR CUTTERBLOCK |
| EC250/EC101 | STAYBOLT FOR TABLE WAYS |
| EC250/EC102 | TABLE ROLLERS |
| EC250/EC103 | END CAP FOR TABLE ROLLERS |
| EC250/EC104 | BUSH FOR TABLE ROLL SPINDLE |
| EC250/EC105 | SPINDLE FOR TABLE ROLLERS |
| EC250/EC106 | LIP PLATE FOR TABLE |
| EC250/EC107 | GUIDE STRIP FOR TABLE |
| EC250/EC108 | STOP STRIP FOR SLIDING TABLE |
| EC250/EC110 | STOP BAR |
| EC250/EC111 | TABLE STOP |
| EC250/EC112 | FLAT SCRAPER |
| EC250/EC113 | SHAFT FOR END STOP |
| EC250/EC114 | FELT FOR SCRAPERS |
| EC250/EC115 | HORIZONTAL ADJUSTING SCREW FOR BOTTOM SCRIBER |
| EC250/EC120 | STUD FOR CRAMP PLATE |
| EC250/EC121 | SLEEVE FOR STUD |
| EC250/EC122 | CONNECTING LINK |
| EC250/EC123 | PIN FOR CONNECTING LINK |
| EC250/EC124 | FULCRUM PIN (5- $\frac{3}{8}$ " LONG) |
| EC250/EC125 | FULCRUM PIN (3- $\frac{3}{8}$ " LONG) |
| EC250/EC126 | SPRING FOR CRAMP PLATE |
| EC250/EC127 | CRAMP PLATE |
| EC250/EC128 | RUBBER PRESSURE STRIPS |
| EC250/EC129 | BOTTOM SCRIBER SPINDLE |

| | |
|---------------|--|
| EC250/EC132 | LOCKNUT FOR TOP TENON SPINDLE |
| EC250/EC133 | LOCKNUT FOR BOTTOM TENON SPINDLE |
| EC250/EC176 | 5" TENON CUTTER (TOP HEAD) |
| EC250/EC177 | 5" TENON CUTTER (BOTTOM HEAD) |
| EC250/EC182 | TENON HEAD FOR 5" LONG TENONS (TOP) |
| EC250/EC183 | TENON HEAD FOR 5" LONG TENONS (BOTTOM) |
| EC250/EC205 | HINGE PLATE FOR GUARD |
| EC250/EC209 | HINGE PIN FOR GUARD |
| EC250/EC215 | SPACING COLLAR |
| | |
| EC250/EH13 | NUT FOR TRAVERSE OF SPINDLE HOUSING |
| EC250/EH17/A | SPINDLE HOUSING FOR TOP TENONING HEAD |
| EC250/EH18/A | SPINDLE HOUSING FOR BOTTOM TENONING HEAD |
| EC250/EH29 | COVER FOR STATOR FRAMES |
| EC250/EH32 | HORIZONTAL INDICATOR (T & B HEADS) |
| EC250/EH34 | SLIP COVER - FRONT |
| EC250/EH35 | SLIP COVER - REAR |
| EC250/EH36 | WEAR STRIP |
| EC250/EH37 | PIN FOR TOP AND BOTTOM CUTTER GUARDS |
| EC250/EH63/A | STOP HOLDER |
| EC250/EH65 | GREASE RETAINER FOR TENONING SPINDLES |
| EC250/EH88/A | UPPER SAW GUARD (BELOW TABLE) |
| EC250/EH91/A | LOWER SAW GUARD FOR C/O SAW BELOW TABLE |
| EC250/EH92 | SAW SPINDLE |
| EC250/EH99/A | INTERMEDIATE SLIDE FOR TOP SCRIBER |
| EC250/EH100 | INTERMEDIATE SLIDE FOR BOTTOM SCRIBER |
| EC250/EH102/A | FRONT MOTOR COVER |
| EC250/EH103/A | REAR MOTOR COVER |
| EC250/EH104 | SLIDE BRACKET |
| EC250/EH105 | FRONT END COVER |
| EC250/EH106 | REAR END COVER |

EC250/EH122 VERTICAL TRAVERSE SCREW FOR TOP SCRIBER
EC250/EH123 HORIZONTAL ADJUSTING SCREW
EC250/EH126 MODIFICATION TO TENONING SPINDLE

EC250/EJ45 STOP
EC250/EJ91 CLAMP POST
EC250/EJ95 PIVOT PIN FOR FENCE
EC250/EJ97 PIVOT PIN FOR STOP
EC250/EJ99 BOLT

EC250/EK61 STOP
EC250/EK206/A BEARING NUT FOR SCRIBING APPARATUS
EC250/EK233 NUT FOR INTERMEDIATE SLIDE FOR SCRIBING SPINDLE

EC250/EKA4B BOTTOM CUTTER CARRIAGE
EC250/EKA13 BRAKE SHOE
EC250/EKA47 BRAKE BOX
EC250/EKA48 END CAP FOR BRAKE BOX
EC250/EKA62 VEE STRIP FOR CARRIAGE
EC250/EKA68 COLLAR FOR CUTTER SPINDLE
EC250/EKA75 COLLAR FOR CUTTER SPINDLE
EC250/EKA182 TOP SCRIBING CUTTERBLOCK
EC250/EKA252 NUT FOR SAW SPINDLE
EC250/EKA254 STUD FOR OPERATING BRAKE
EC250/EKA319 COLLAR FOR BUSH
EC250/EKA337 PUSH BUTTON PLATE
EC250/EKA338 PUSH BUTTON PLATE

EC250/EL461 VEE STRIP FOR BOTTOM SCRIBER INTER SLIDE

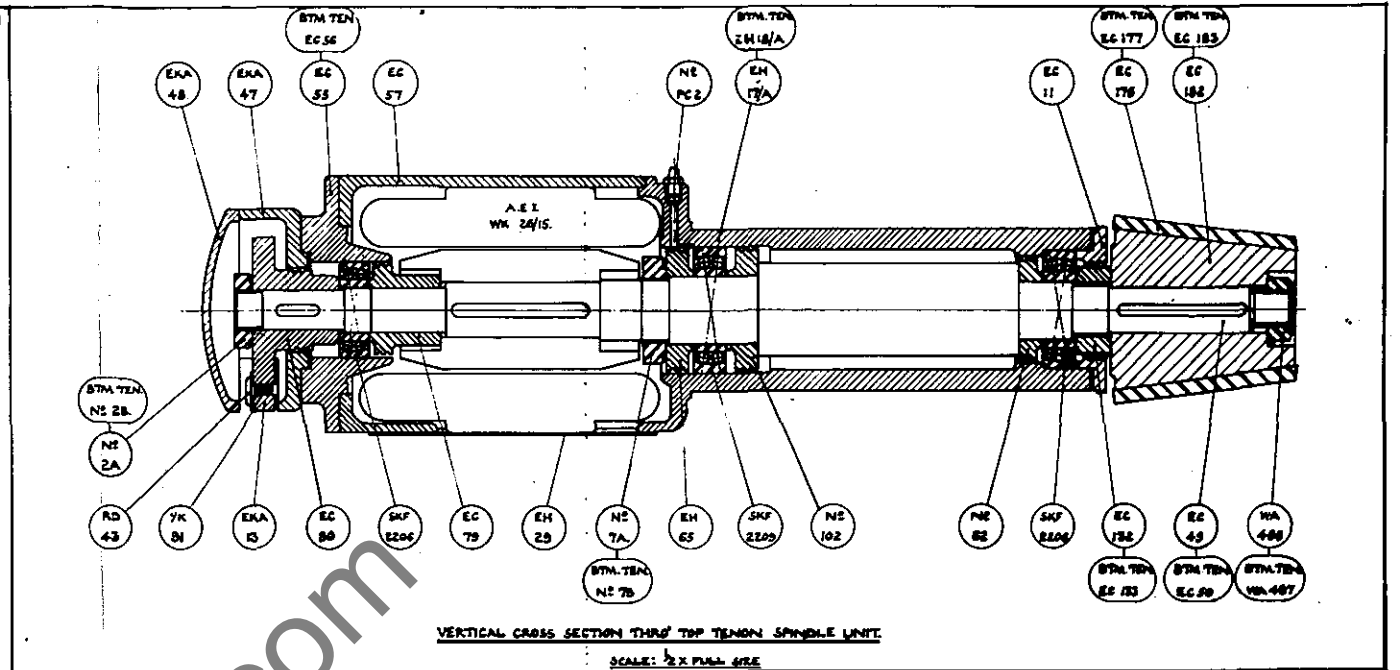
EC250/E023A STATOR FRAME FOR L.H. CROSS CUT UNIT
EC250/E046A STATOR FRAME FOR T & B SCRIBERS
EC250/E047 CUTTERBLOCK BEARING HOUSING
EC250/E048 CUTTERBLOCK BEARING END COVER
EC250/E0307 HORIZONTAL SCREW FOR CROSS CUT SAW
EC250/E0312 SPINDLE FOR LEFT TOP SCRIBER

EC250/1A BALL BEARING LOCKNUT
EC250/1A TWO BALL HANDLE
EC250/1A CLAMP NUT LEVER
EC250/1A SAW COLLAR
EC250/1A TEE LOCKING HANDLE
EC250/1B BALL BEARING LOCKNUT
EC250/1B TWO BALL HANDLE
EC250/1B CLAMP NUT
EC250/1B HANDWHEEL
EC250/1B SAW COLLAR
EC250/1C TWO BALL HANDLE
EC250/1E TWO BALL HANDLE
EC250/2 GREASE RETAINER
EC250/2 HORN HANDLE
EC250/2A BALL BEARING LOCKNUT
EC250/2A HANDWHEEL
EC250/2A PIPSCREW
EC250/2A SLIDE LOCKSCREW
EC250/2B BALL BEARING LOCKNUT
EC250/2D STAR HANDWHEEL
EC250/3 COLLAR
EC250/3B HANDWHEEL
EC250/5 COLLAR
EC250/5B BALL BEARING LOCKNUT

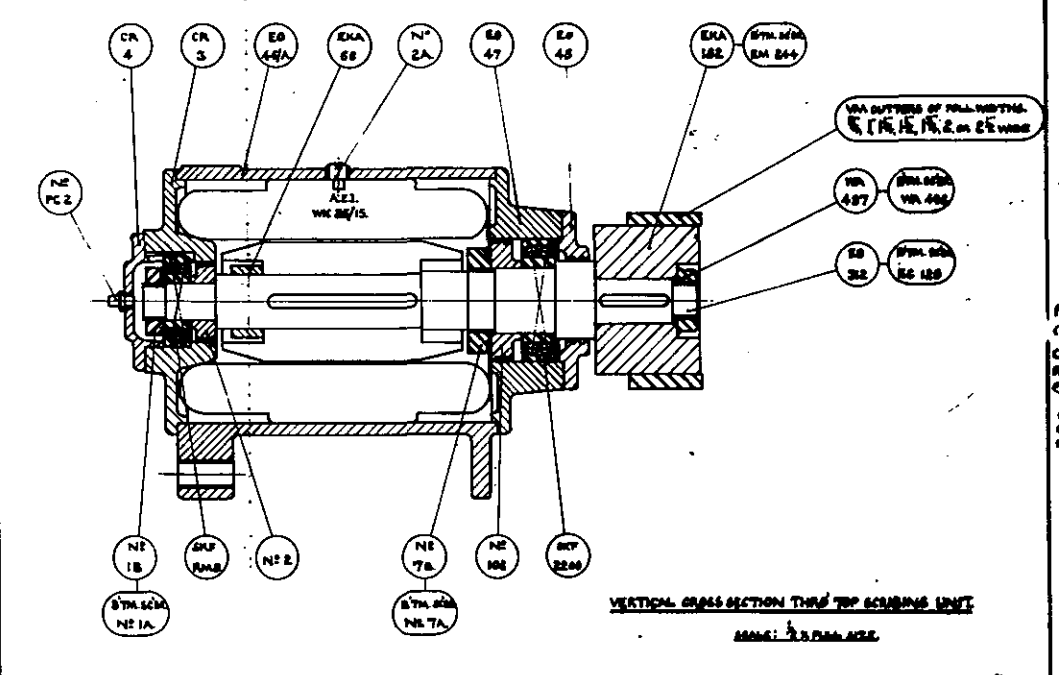
| | |
|---------------|--|
| EC250/7A | BALL BEARING LOCKNUT |
| EC250/7B | BALL BEARING LOCKNUT |
| EC250/11A | HANDWHEEL |
| EC250/62 | GREASE RETAINER |
| EC250/92 | GREASE RETAINER |
| EC250/102 | GREASE RETAINER |
| EC250/AF39 | LOCKNUT FOR PIVOT PINS |
| EC250/CR3 | TAIL END HOUSING |
| EC250/CR4 | END CAP FOR TAIL END |
| EC250/EM244 | TOP SCRIBING CUTTERBLOCK |
| EC250/LM77 | BUFFER FOR SLIDE |
| EC250/ME136 | LEVER PLUNGER SPRING |
| EC250/PC2 | OIL NIPPLE |
| EC250/QS2 | 12" FLAT CROSS CUT SAW |
| EC250/RD43 | PIVOT PIN |
| EC250/SKF.08 | SKEFCO BEARING |
| EC250/SKF2206 | SKEFCO BEARING |
| EC250/SKF2208 | SKEFCO BEARING |
| EC250/SKF2209 | SKEFCO BEARING |
| EC250/SKFRL56 | SKEFCO BEARING |
| EC250/SKF.RM8 | SKEFCO BEARING |
| EC250/SSR4 | BRASS SCALE $3\frac{1}{4}$ " x $\frac{5}{8}$ " x 20 B.W.G. |
| EC250/SSR40 | BRASS SCALE $3\frac{1}{4}$ " x $\frac{5}{8}$ " x 20 BWG |
| EC250/WA497 | NUT FOR SCRIBER SPINDLE |
| EC250/WA498 | NUT FOR SCRIBER SPINDLE |
| EC250/YK91 | BRAKE LINING |

| PRINCIPAL DIMENSIONS AND CAPACITIES. | |
|---|------------------------------|
| MOTOR DRIVING HORIZONTAL CUTTER HEADS. | 2 H.P. |
| MOTOR DRIVING TOP AND BOTTOM SCRIBING HEADS. | 2 H.P. |
| MOTOR DRIVING REAR CUT-OFF SAW. | 1 1/2 H.P. |
| DIAMETER OF HORIZONTAL CUTTER HEADS. | 6 1/2 (165 MM.) |
| DIAMETER OF TOP AND BOTTOM SCRIBING HEADS. | 6 1/2 (200 MM.) |
| DIAMETER OF REAR CUT-OFF SAW. | 12" (305 MM.) |
| DIAMETER OF GROOVING HEADS FOR TOP AND BOTTOM SCRIBERS. | 11" (279 MM.) |
| MAX. LENGTH OF TENON. | 5" (127 MM.) |
| MAX. STOCK SECTION. | 14" x 4 1/2" (368 x 114 MM.) |
| FENCE WITH SWIVEL TR. | 4-5" |
| HEIGHT OF TABLE FROM FLOOR. | 2' 8 3/4" (832 MM.) |

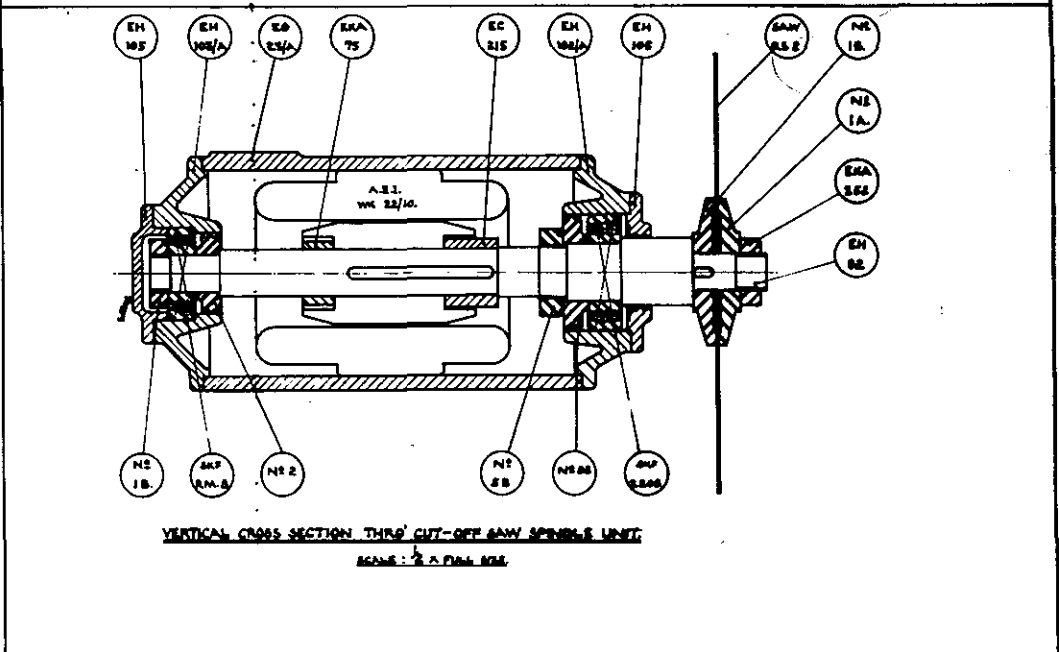
14" x 4 1/2" SINGLE END TENONER TYPE E.C.A.



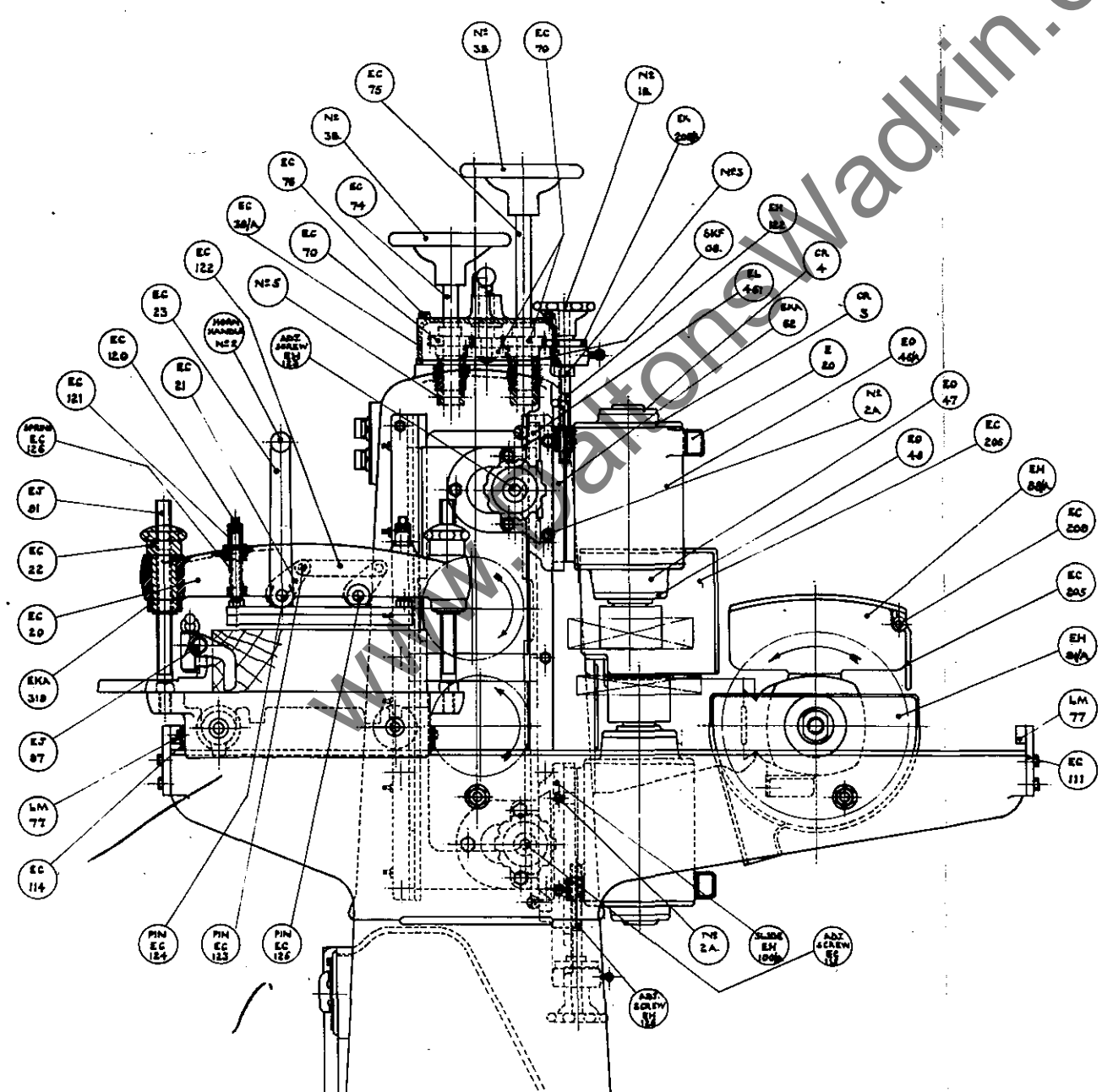
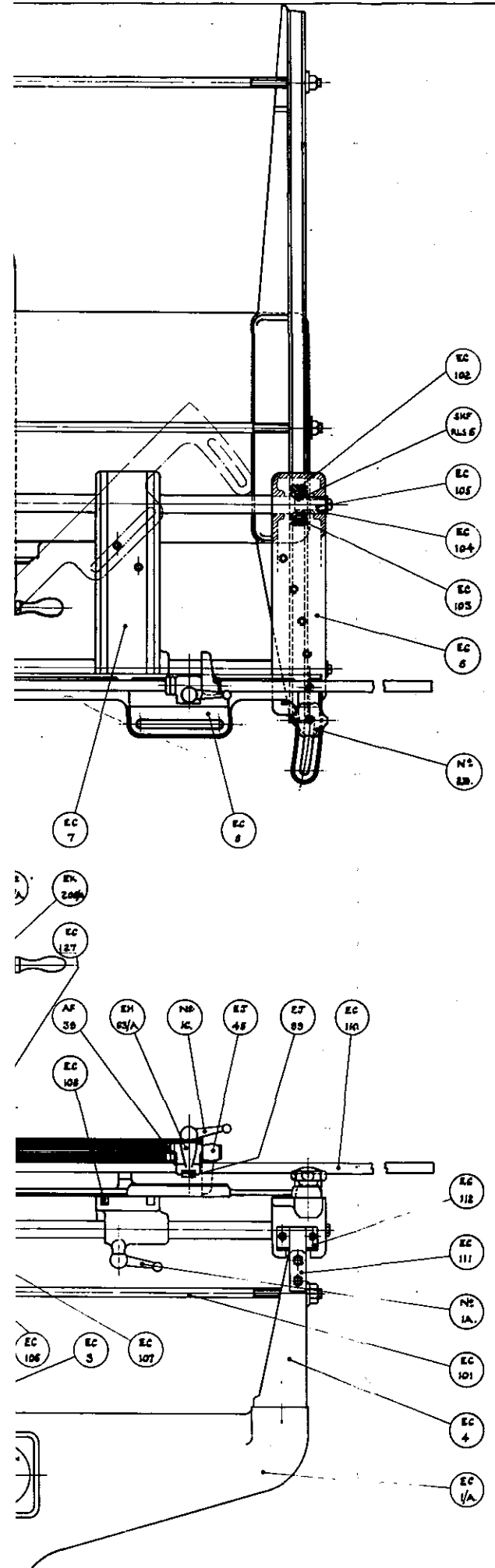
VERTICAL CROSS SECTION THRU TOP TENON SPINDLE UNIT
SCALE: 3/4" FULL SIZE



VERTICAL CROSS SECTION THRU TOP SCRIBING UNIT
SCALE: 3/4" FULL SIZE



VERTICAL CROSS SECTION THRU CUT-OFF SAW SPINDLE UNIT
SCALE: 3/4" FULL SIZE



GENERAL ARRANGEMENT OF SINGLE END TENONER—TYPE E.C.A.

CAPACITY: 14" x 4 1/2"

SCALE: 3/4" FULL SIZE

DATE: 5-1-64

EC 250

| PRINCIPAL DIMENSIONS AND CAPACITIES. | |
|--|------------------------------|
| MOTOR DRIVING HORIZONTAL CUTTER HEADS. | 2 H.P. |
| MOTOR DRIVING TOP AND BOTTOM SCRIBING HEADS. | 2 H.P. |
| MOTOR DRIVING REAR CUT-OFF SAW. | 1 1/2 H.P. |
| DIAMETER OF HORIZONTAL CUTTER HEADS. | 6 1/2 (165 MM.) |
| DIAMETER OF TOP AND BOTTOM SCRIBING HEADS. | 6 1/4 (162 MM.) |
| DIAMETER OF REAR CUT-OFF SAW. | 12" (305 MM.) |
| DIAMETER OF GADGING HEADS FOR TOP AND BOTTOM SCRIBERS. | 11" (279 MM.) |
| MAX. LENGTH OF TENON. | 5" (127 MM.) |
| MAX. STOCK SECTION. | 14" x 4 1/2" (356 x 114 MM.) |
| FENCE WILL SWIVEL TO. | 45° |
| HEIGHT OF TABLE FROM FLOOR. | 2' 8 3/4" (832 MM.) |

14" x 4 1/2" SINGLE END TENONER TYPE ECA.

